

## nControl

Graphical User Interface Software Application

nControl is a simple, easy-to-use software application designed to simplify the operation of auto-acquisition antenna systems.



**Main "Auto" Screen**

System deployed with LOCK on target data satellite.  
Note "LOCK" indication in IDD display, "Locked" Green LED in the middle, and a high SNR reading.



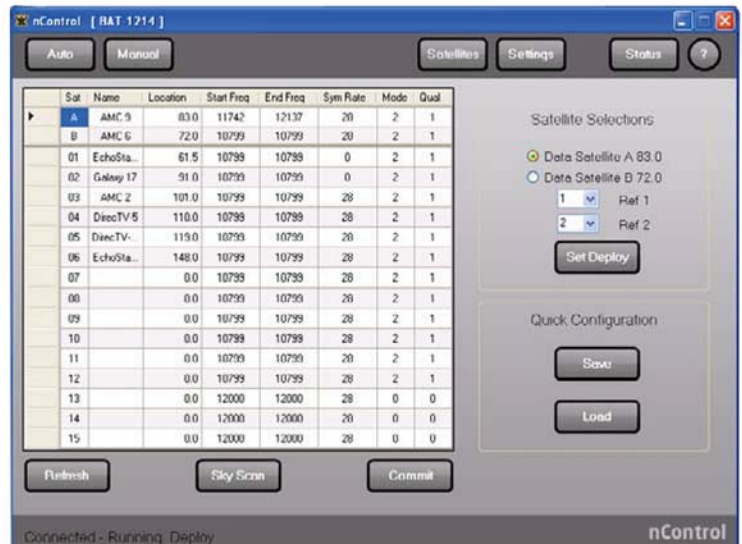
**"Manual" Mode**

Manually jog the elevation, azimuth, and polarity and enter compass values, GPS coordinates, and polarity settings. Enter an azimuth and elevation value and command the system to "GOTO" those headings.



**"Settings" Advanced Page**

Set the region of operation, LNB LO Frequency, high and low end of the LNB frequency range, and the LNB gain. Select system scan type such as frequency ReUSE or ReSCAN. ReSCAN is the default and is recommended.



**"Satellites" Advanced Page**

Set target data satellite A and B from a drop down list of satellites and select the proper reference satellites for each data satellite. Perform a "SkyScan" procedure, and if applicable, enter a pre-determined configuration file that is supplied from the network operator.